

**P&M**

design  
furniture  
interiors

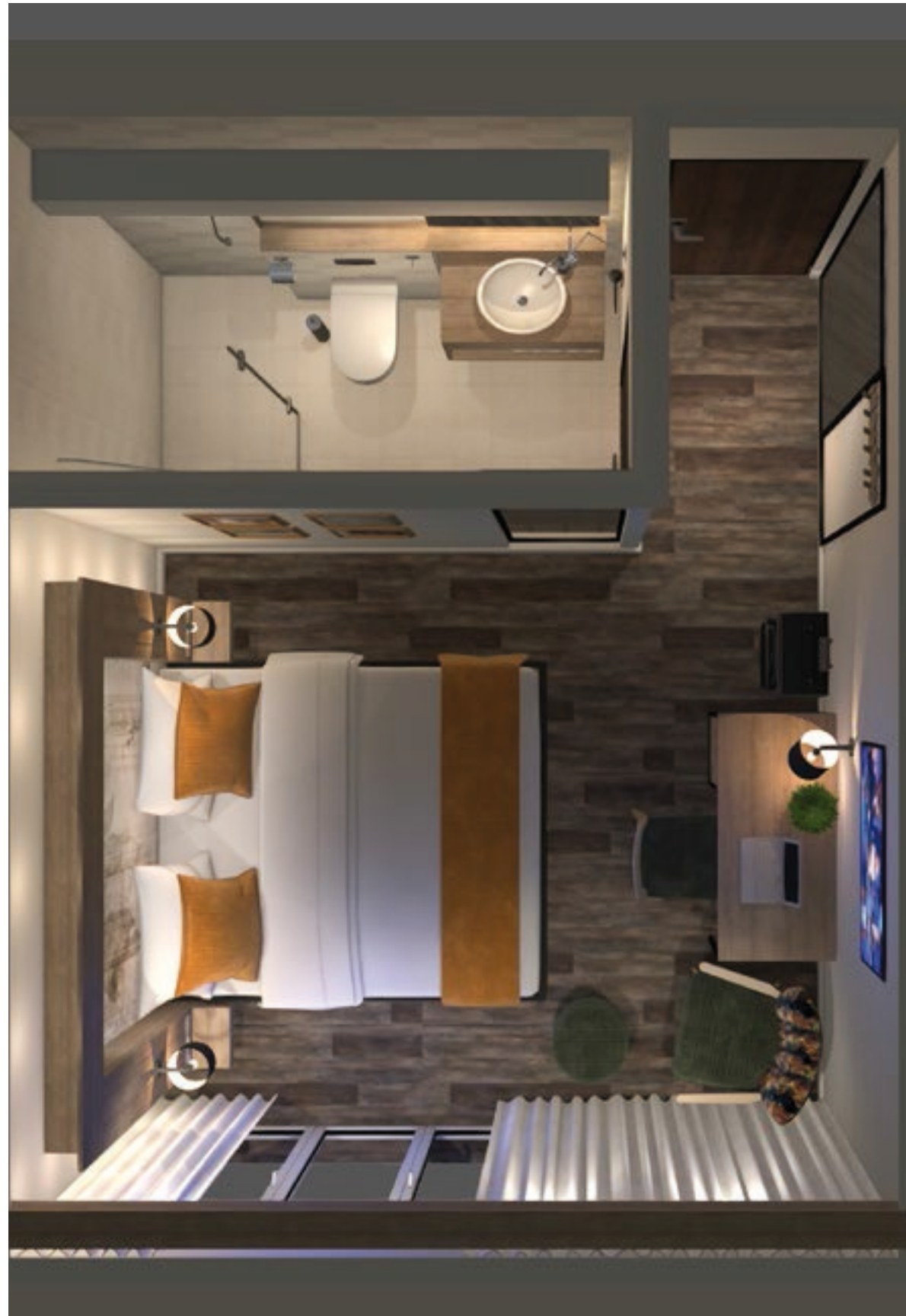
2022

# HOTEL CONCEPT



# ABOUT US

A few things about us and how we can help your business



## About us

Over the years, P&M furniture has grown by adapting both the design services and the product collection to the customer's needs and preferences. For the last 30 years, the company expanded into different branch offices, adding many valuable specialists to the team: architects, designers, interior architects, engineers, project managers, purchase specialists, and many more that can offer integrated solutions to provide harmonious interiors. If you ever have the chance to meet them you will understand our enthusiasm for every project.

P&M furniture helps its customers to realize an individual hotel interior that perfectly matches the identity and target group of the business. The working method of P&M furniture is unique and guarantees a well-thought-out interior plan, so that in the long term money can be saved and yields can be optimized.

Because P&M furniture is specialized in the field of hospitality interiors, the P&M team has a lot of experience, which makes it possible to work better and faster. Our complete services help you save time and money, since you only have one contact to work with. Regarding the hotel rooms, we offer two types of services:

### 1. Custom-made concepts

We use our own design team and work together with you on finding the best room design that suits your customer's needs. We create every concept from scratch, according to your brand and your values.

This ensures that you get a unique design, that would impress your guests and make them return.

### 2. Modular concepts

Consists in pre-designed room concepts, which can be easily implemented. This are the best option if you're looking for a both fast and functional renovation process, on a fixed budget.

### Why do we care so much about the looks

A hotel isn't just a place to stay, but also a complete service. The competition in this branch is very high and differentiation mainly consists in the interior design and the chosen furniture. The guest's first impression is made after seeing the entrance hall or the lobby.

More and more hotels are redecorating their interiors because of the new trends and because they are trying to make their guests feel at home. Hotels that are more extravagant also include in their design, exclusive lights, chandeliers, waterfalls or even green spaces full of flowers. We are able to offer full-hotel package, lobby, rooms, restaurant design for any budget.

*On the following pages, we'll show you some ideas and references to get some inspiration on how you can give your customers the best experience possible.*

# THE PHASES OF A PROJECT

Clear and simple steps we take to put your wishes into action

## 1. MEETING WITH THE CUSTOMER

In this phase, we determine together with our client what kind of facility he wishes to design, the number of seats needed to accommodate future customers, which functional requirements must be fulfilled and which expectations there are with regard to design and concept.

## 2. DESIGN

This is a step-by-step process that includes:

- Creation of a 2D plan view and floor plan.
- Creation of the 3D plan.
- Selection of fabrics and materials by our Interior Designers.
- Generation of realistic 3D representations of the concept: Modern 3D visualization gives a first impression of the concept final interior design. An important decision-making tool. We demonstrate the ambience of your rooms clearly and understandable. This makes the spatial effect visible to everyone.
- Technical drawings

## 3. PRICE OFFER

Thanks to our extensive experience in the market and our professional purchasing department we can submit a detailed price quote for your projects without unpleasant surprises. We always consider the planned budget and come up with solutions to meet the given requirements. It is a very transparent process, in which our customer always has control.

## 4. PROJECT PLANNING

A well organized project management team is the basis for a timely, cost effective and quality-oriented project progress. In this phase, we ensure a smooth workflow by setting fine details such as: logistics, final floor plan, spaces, equipment placement, cooling systems, wall deviations and technical drawings.

## 5. PRODUCTION

As a general contractor, we offer turn-key solutions with the help of our experts and the skills of our craftsmen. We offer support and manage the project from the first drawing to the last screw.

## 6. TRANSPORT AND ASSEMBLY

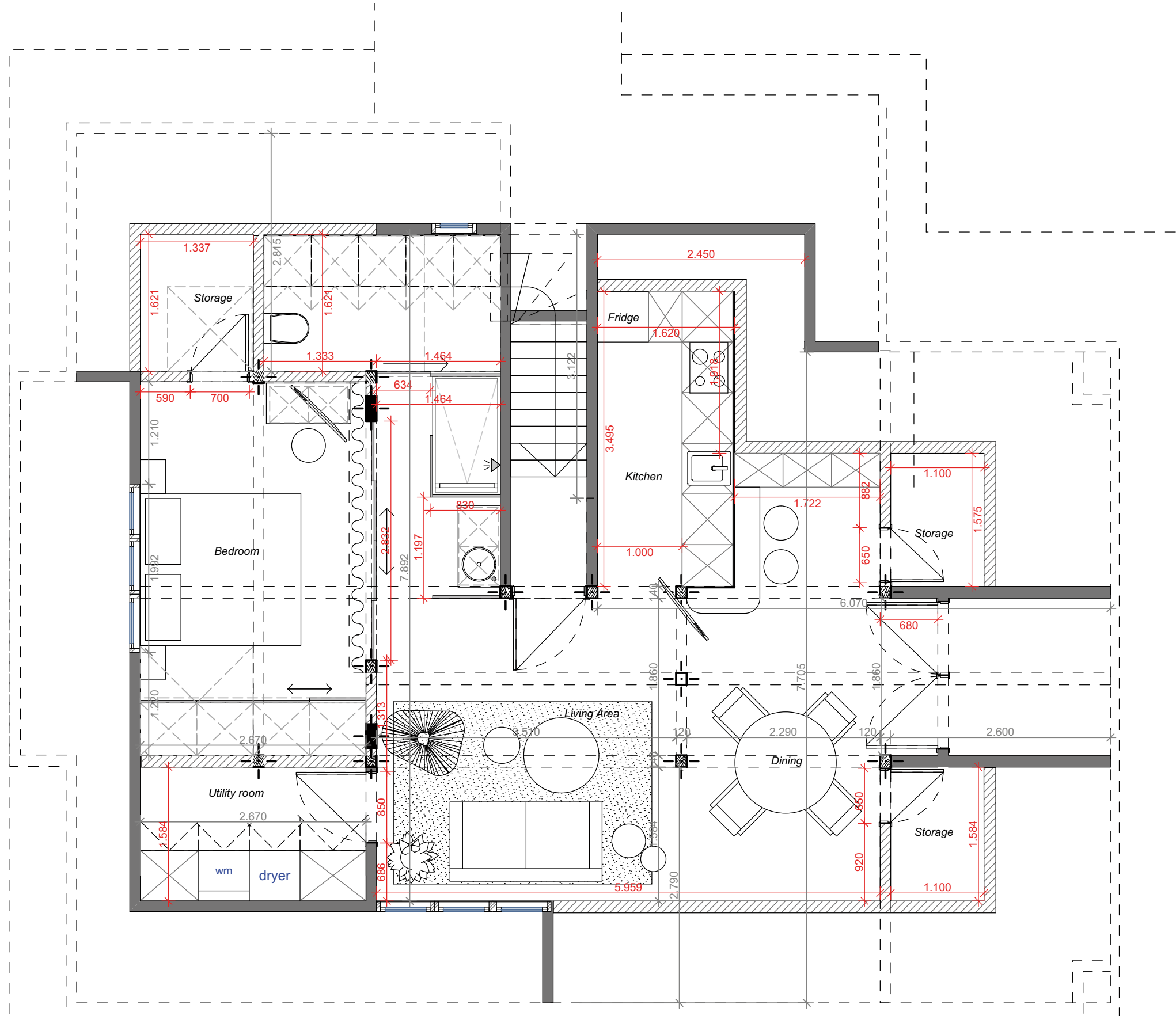
We will prepare and coordinate the entire delivery process along with installation and assembly of all required elements.

*Our entire interior design process is designed to help you save time and money and benefit from professional services at the same time. Our designs offer unique, durable, furnishings with maximum efficiency.*



# THE PHASES OF A PROJECT

Clear and simple steps we take to put your wishes into action



# THE PHASES OF A PROJECT

Clear and simple steps we take to put your wishes into action



# THE PHASES OF A PROJECT

Clear and simple steps we take to put your wishes into action



# THE PHASES OF A PROJECT

Clear and simple steps we take to put your wishes into action





**CUSTOM-MADE  
CONCEPTS**



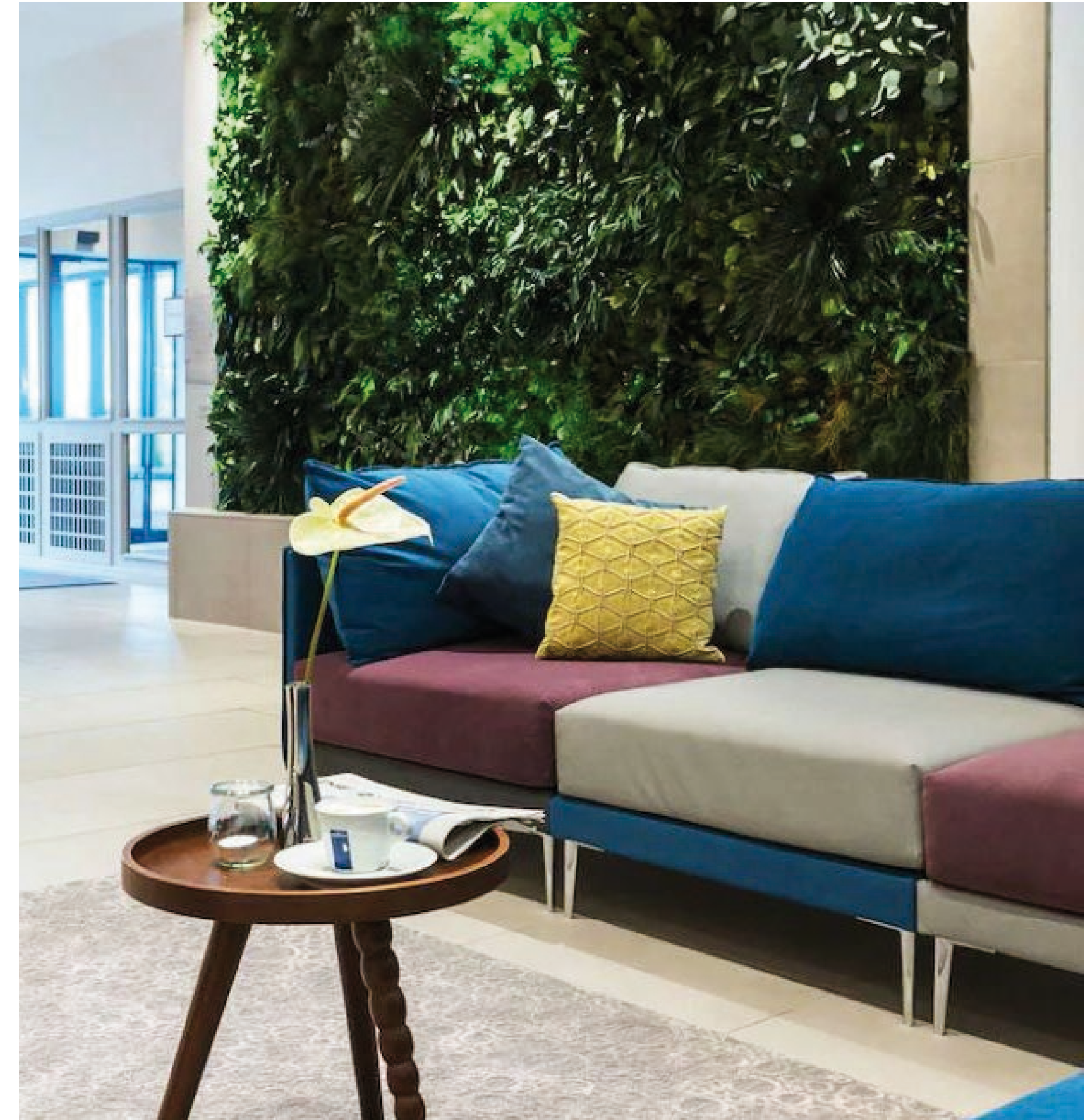
# | CUSTOM-MADE CONCEPTS



# | CUSTOM-MADE CONCEPTS



# | CUSTOM-MADE CONCEPTS



# | CUSTOM-MADE CONCEPTS



# | CUSTOM-MADE CONCEPTS



# | CUSTOM-MADE CONCEPTS



# | CUSTOM-MADE CONCEPTS



# | CUSTOM-MADE CONCEPTS





# CUSTOM-MADE CONCEPTS



# | CUSTOM-MADE CONCEPTS



# | CUSTOM-MADE CONCEPTS



# | CUSTOM-MADE CONCEPTS



# | CUSTOM-MADE CONCEPTS



# | CUSTOM-MADE CONCEPTS



# | CUSTOM-MADE CONCEPTS



# | CUSTOM-MADE CONCEPTS





A large orange triangle pointing to the right, occupying the bottom-left portion of the page. The text 'MODULAR CONCEPTS' is written in white, bold, uppercase letters in the bottom-left corner of this triangle.

**MODULAR  
CONCEPTS**

# MODULAR CONCEPTS







# MODULAR CONCEPTS



# MODULAR CONCEPTS



# MODULAR CONCEPTS



2





# MODULAR CONCEPTS



# MODULAR CONCEPTS









**P&M furniture  
International & Benelux**

Head Office

Tel: +31 77 3977888

E-mail: [sales@pmfurniture.com](mailto:sales@pmfurniture.com)

**P&M furniture  
Deutschland**

Branch Office

Tel: +49 2834-9429555

E-mail: [sales@pmfurniture.com](mailto:sales@pmfurniture.com)

**P&M furniture  
Romania**

Branch Office

Tel: +40 364 143 781

E-mail: [office@pmfurniture.ro](mailto:office@pmfurniture.ro)