



# Design Process

DESIGN

furniture

interiors

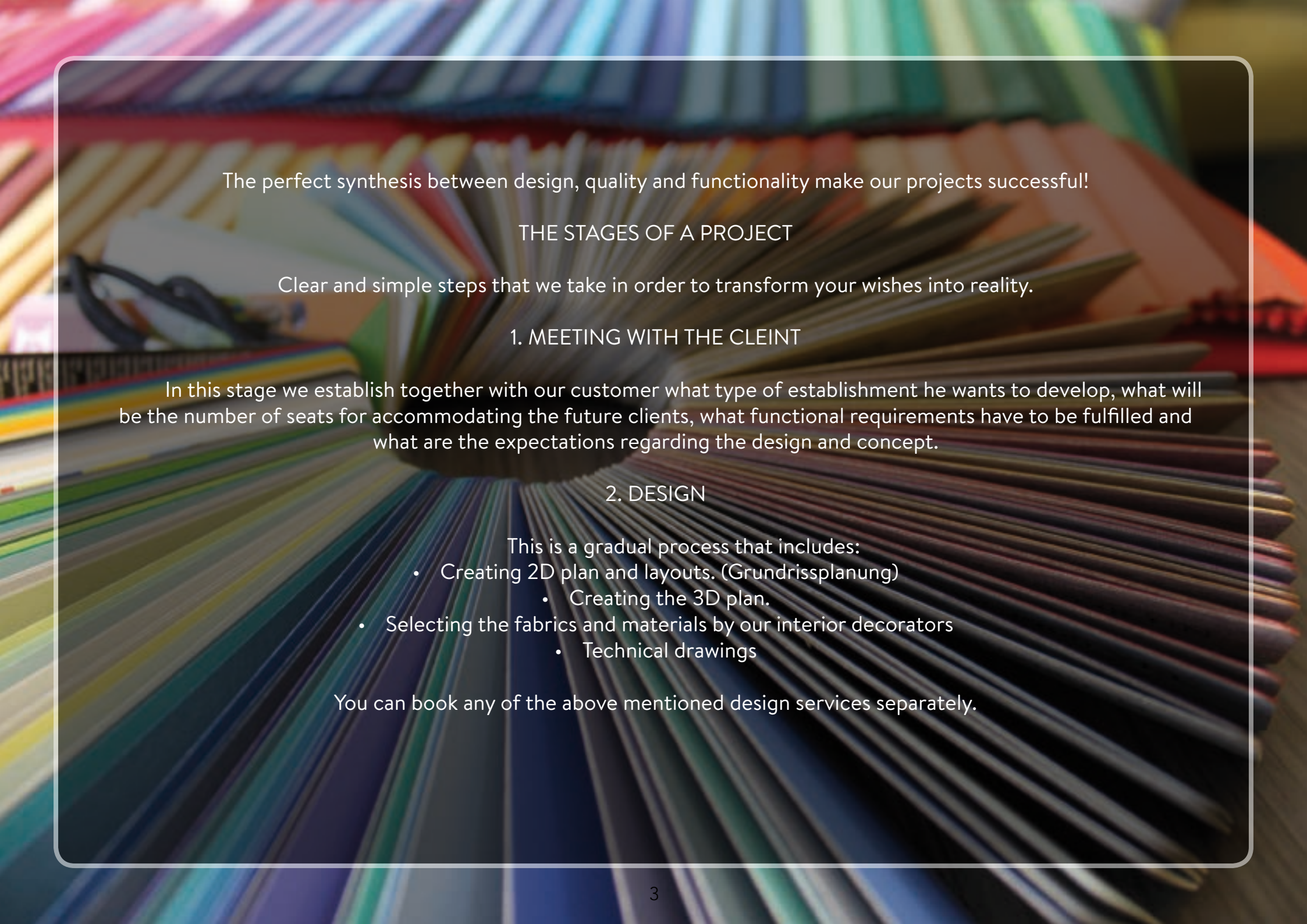
design

**P&M** | design  
furniture  
interiors

news  
2016







The perfect synthesis between design, quality and functionality make our projects successful!

## THE STAGES OF A PROJECT

Clear and simple steps that we take in order to transform your wishes into reality.

### 1. MEETING WITH THE CLIENT

In this stage we establish together with our customer what type of establishment he wants to develop, what will be the number of seats for accommodating the future clients, what functional requirements have to be fulfilled and what are the expectations regarding the design and concept.

### 2. DESIGN

This is a gradual process that includes:

- Creating 2D plan and layouts. (Grundrissplanung)
  - Creating the 3D plan.
- Selecting the fabrics and materials by our interior decorators
  - Technical drawings

You can book any of the above mentioned design services separately.



### 3. PRICE OFFER.

Due to our rich experience in the market and our professional purchase department we can prepare a well detailed price offer for your projects without any unpleasant surprises.

We always take into consideration the planned budget and come up with solutions to fulfil the given requirements. This is a very transparent process in which our client is always in control.

### 4. PROJECT PLANNING.

A good organized project management team is the base for a timely, cost-effective and quality-orientated project flow. In this stage we ensure a smooth work flow by establishing the fine details like: logistics, final layouts, spacing, placing equipment, cooling systems, lighting plan, deviation walls and technical drawings.

### 5. PRODUCTION.

As complete builders/ fitters we will support and manage your project from the first drawing to the last screw with the help of our specialists and the skill of our craftsmen from our workshop.

### 6. TRANSPORT AND ASSEMBLY.

We will prepare and coordinate the entire delivery process along with the fitting and assembly of all the needed elements. Our entire process for interiors was developed in order to save you time and money while benefiting from professional services.

Our Designs feature unique long lasting furnishing with maximum efficiency.





## 2D Floorplan











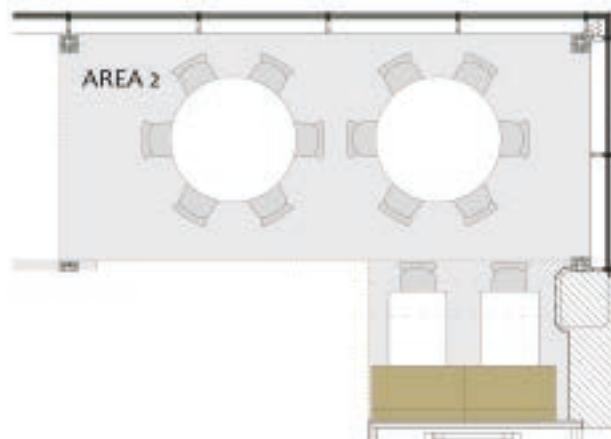






## Product selection

**AREA 2 : 16 sitting places**



BAROC A



BAROC S



LIBERTY 4210



SOFT



ARTU D=70cm

**AREA 4 : 24 sitting places**



FELICIA



BAROC S



BISTRO



LIBERTY 4210



SOFT

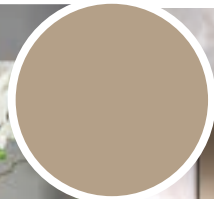
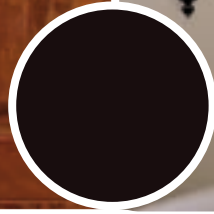
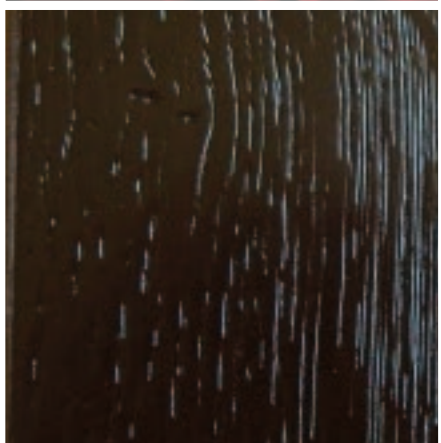
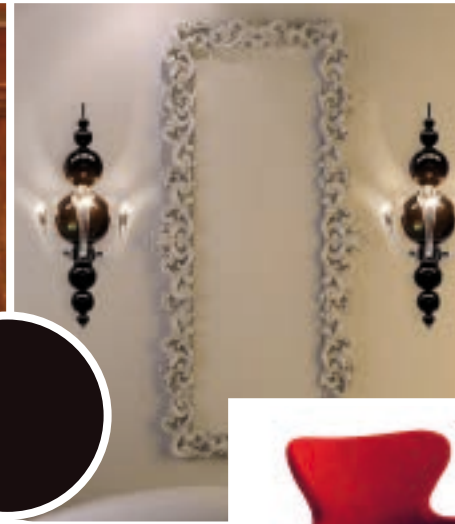






## Color and material selection





Modern Elegance



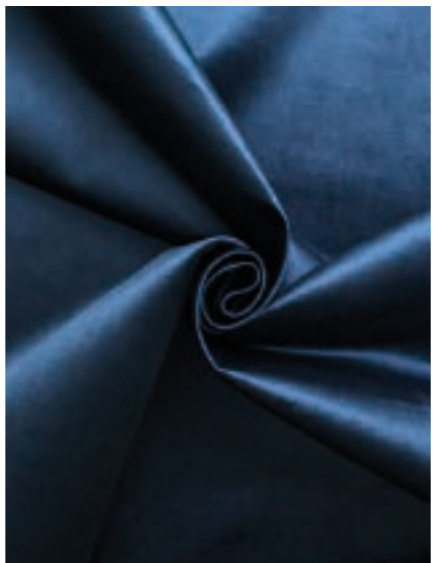


Classic Steak House



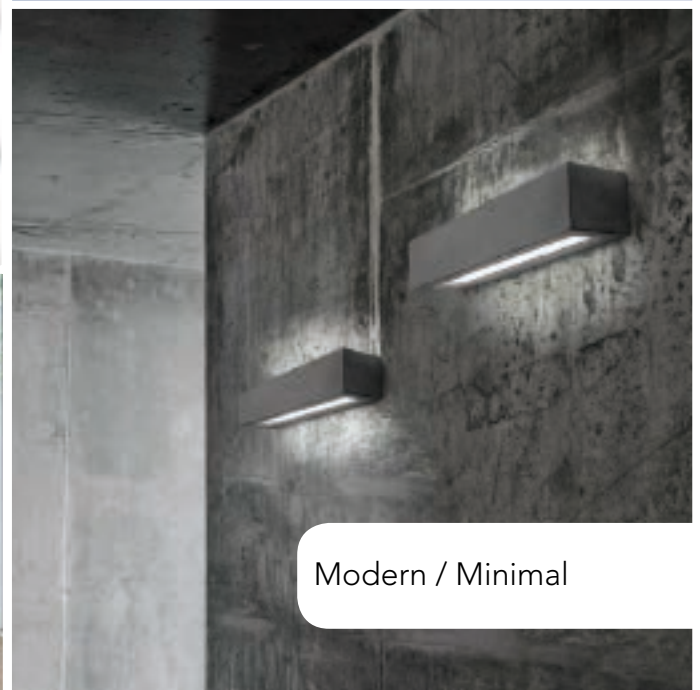
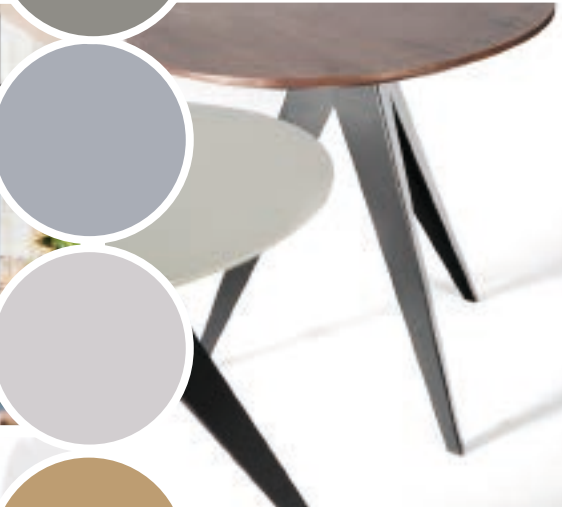


Modern exotic

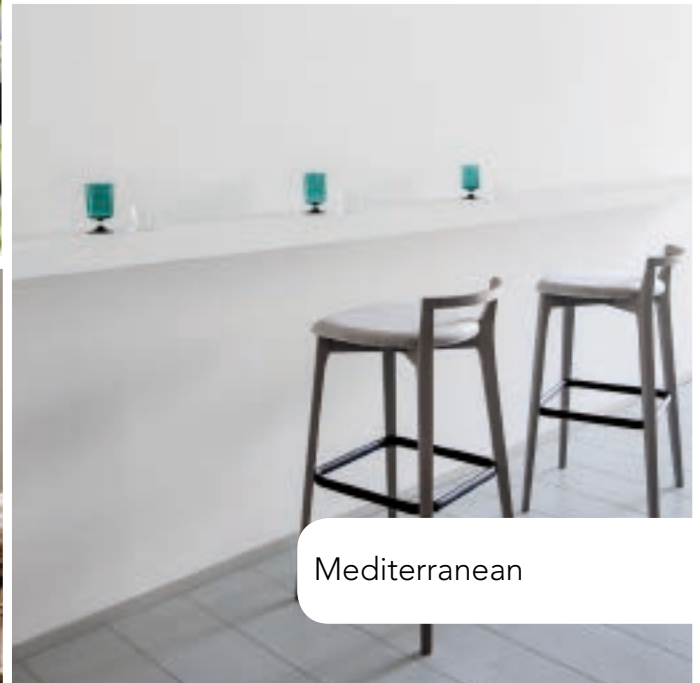


Sea theme





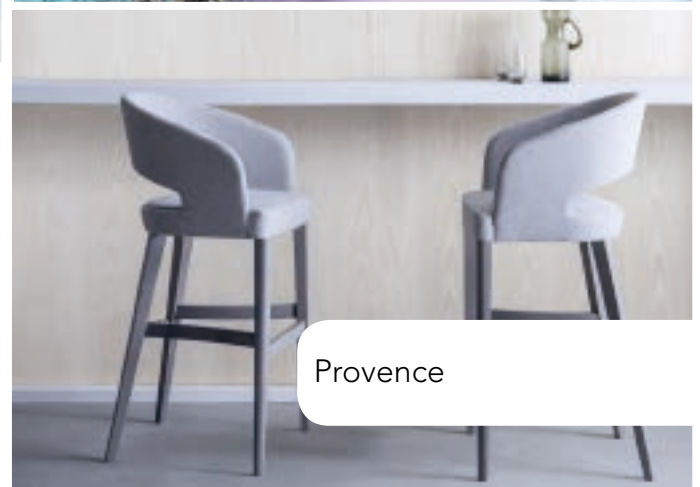
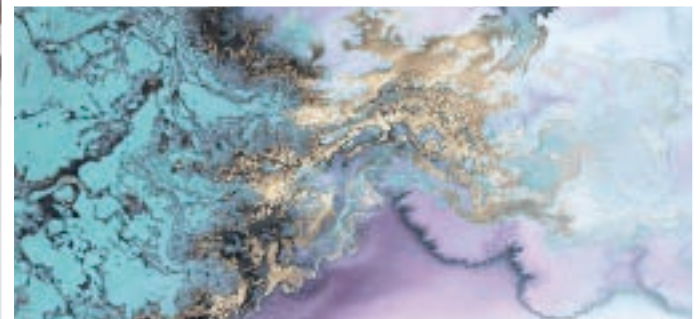
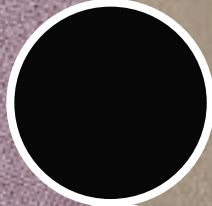
Modern / Minimal



Mediterranean

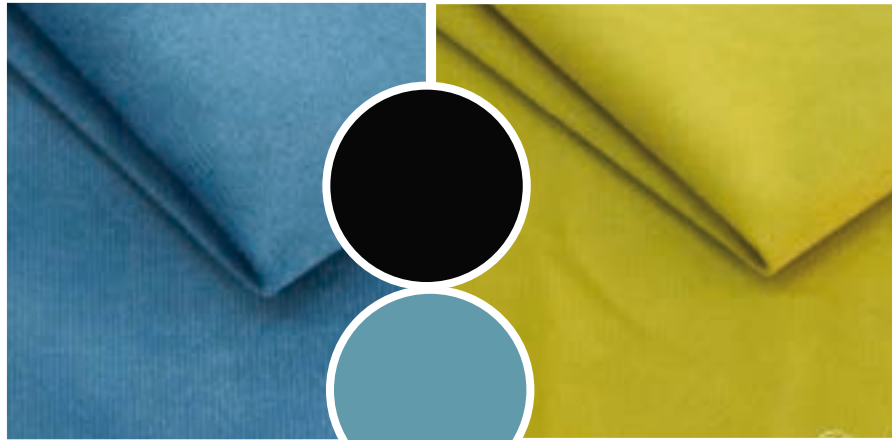






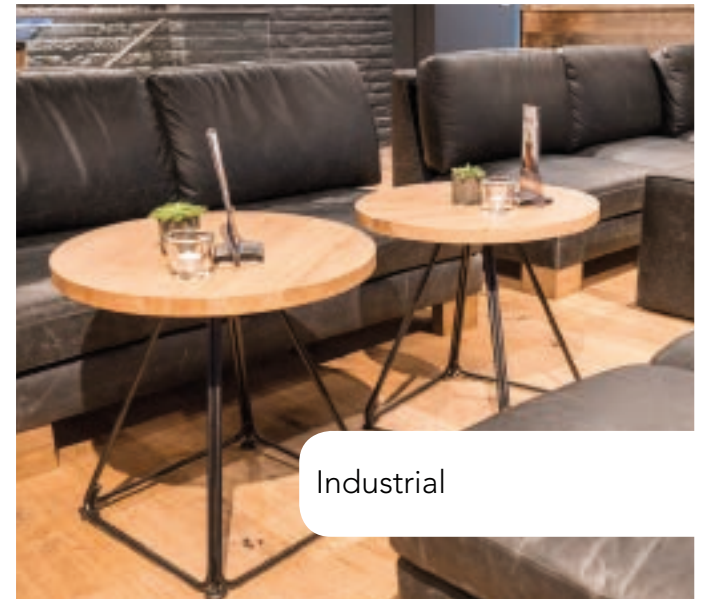
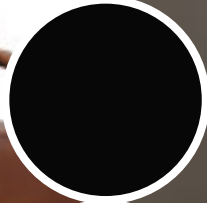
Provence



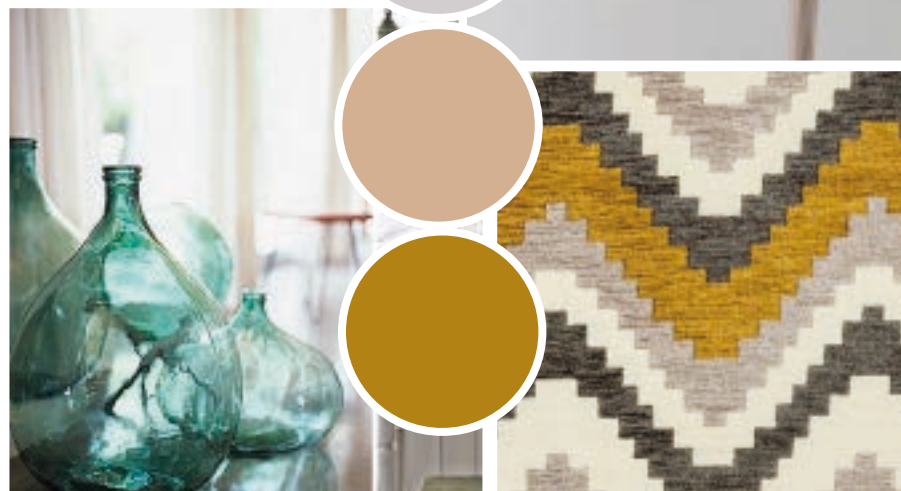
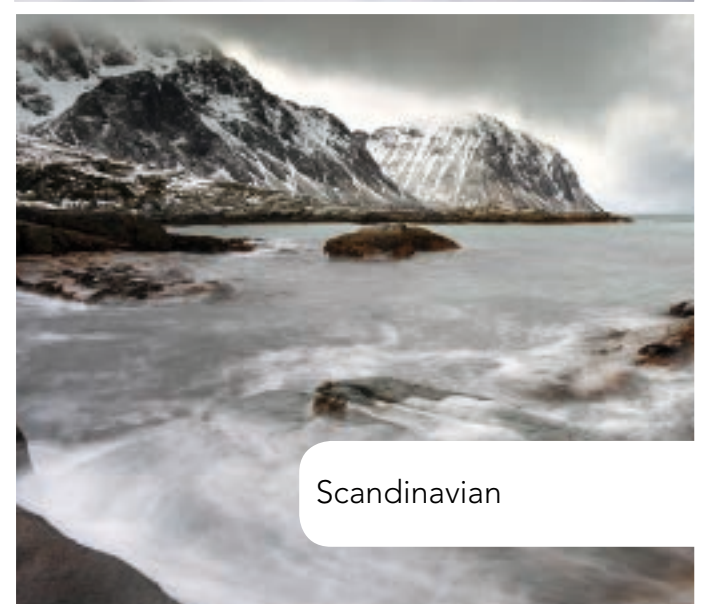
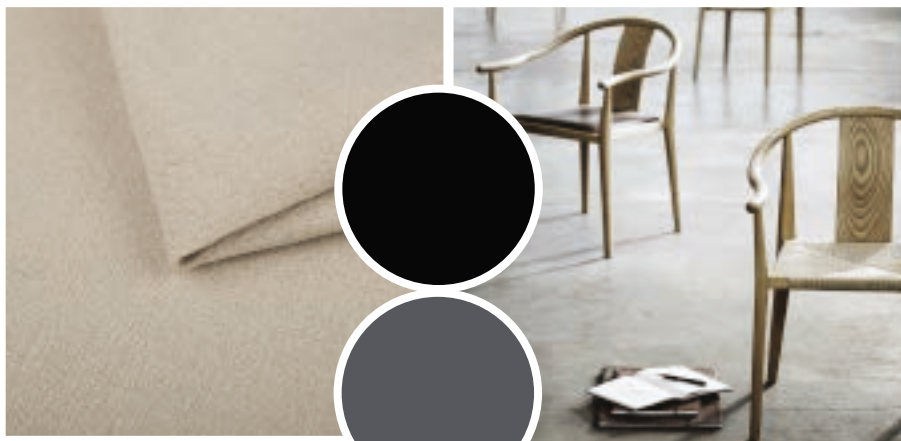


Tropical





Industrial



Scandinavian

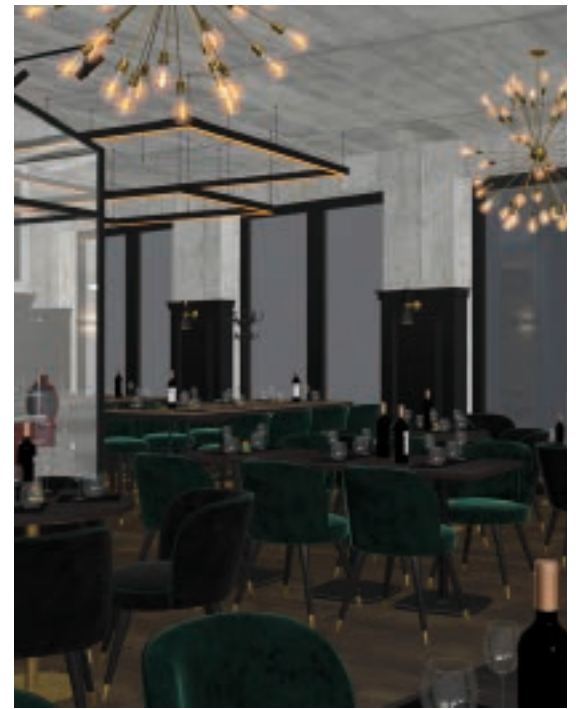




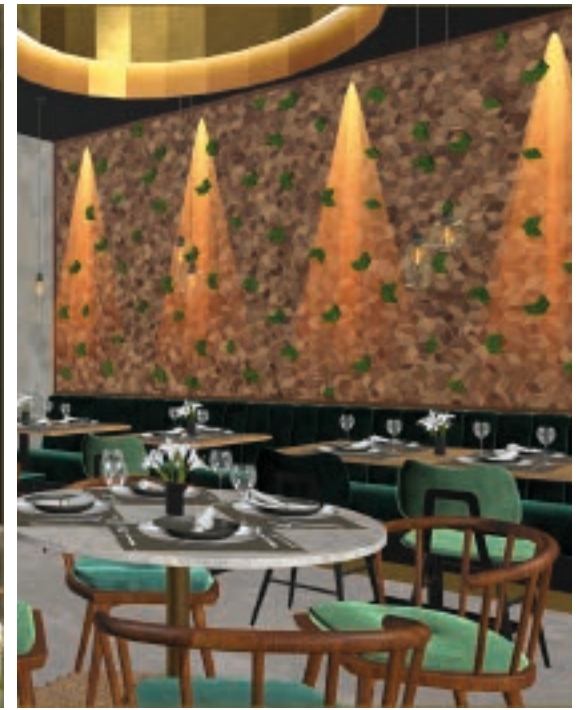
## 3D - Plan



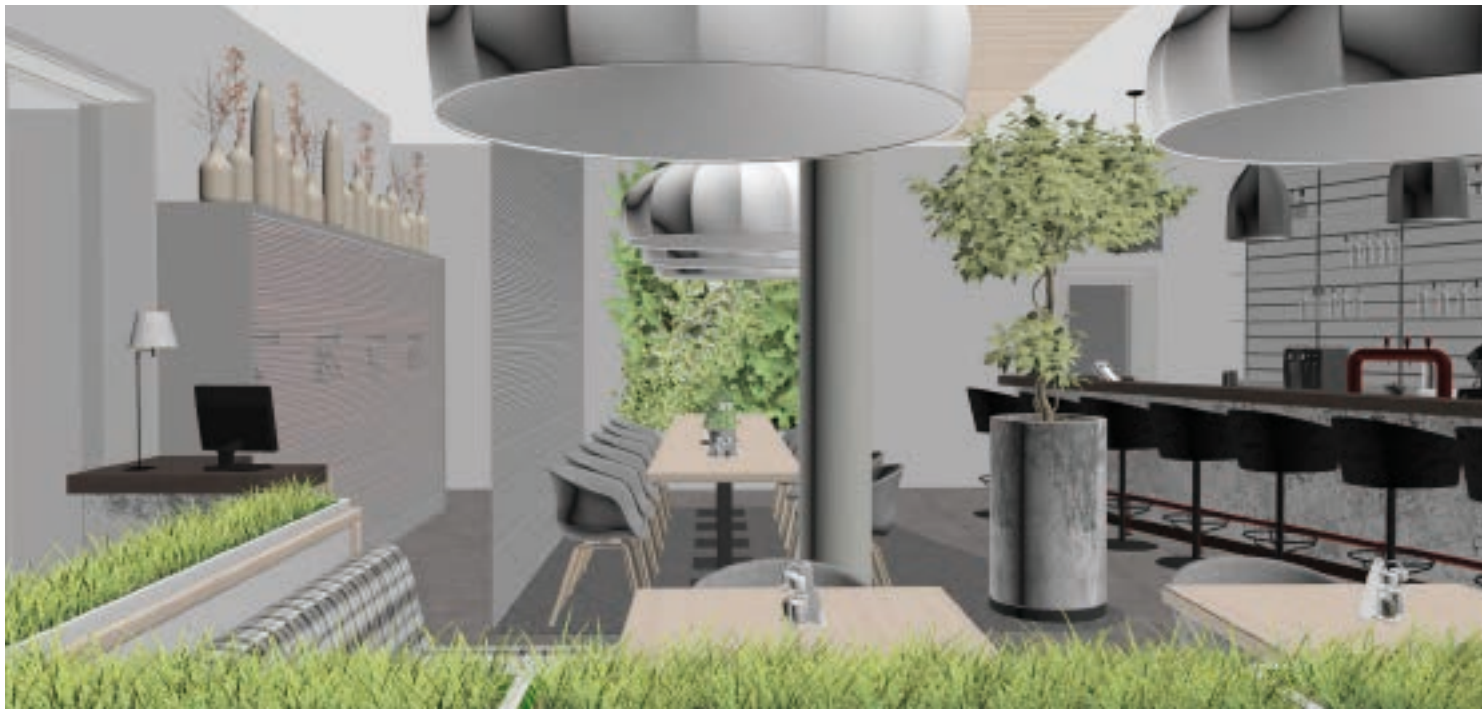




















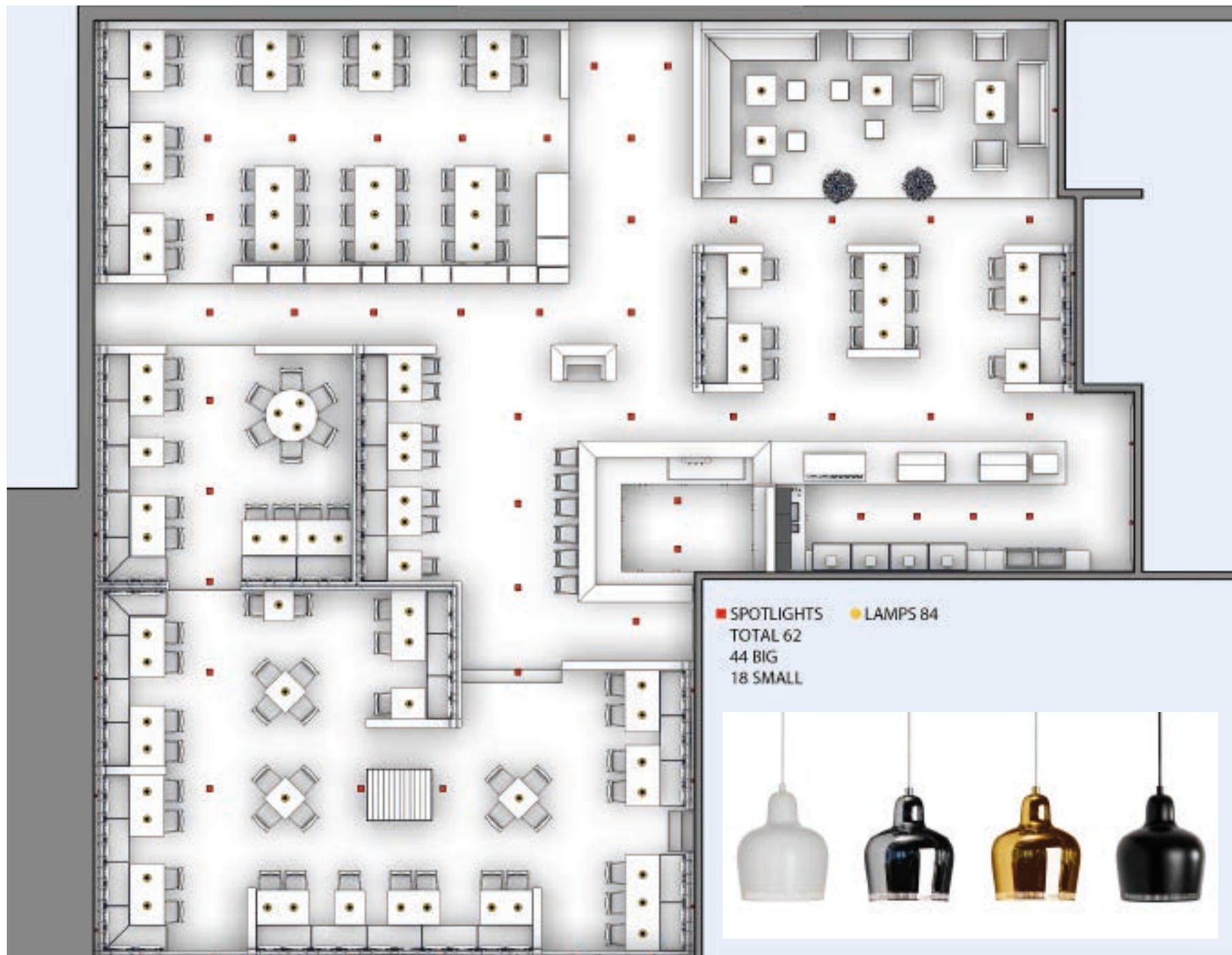




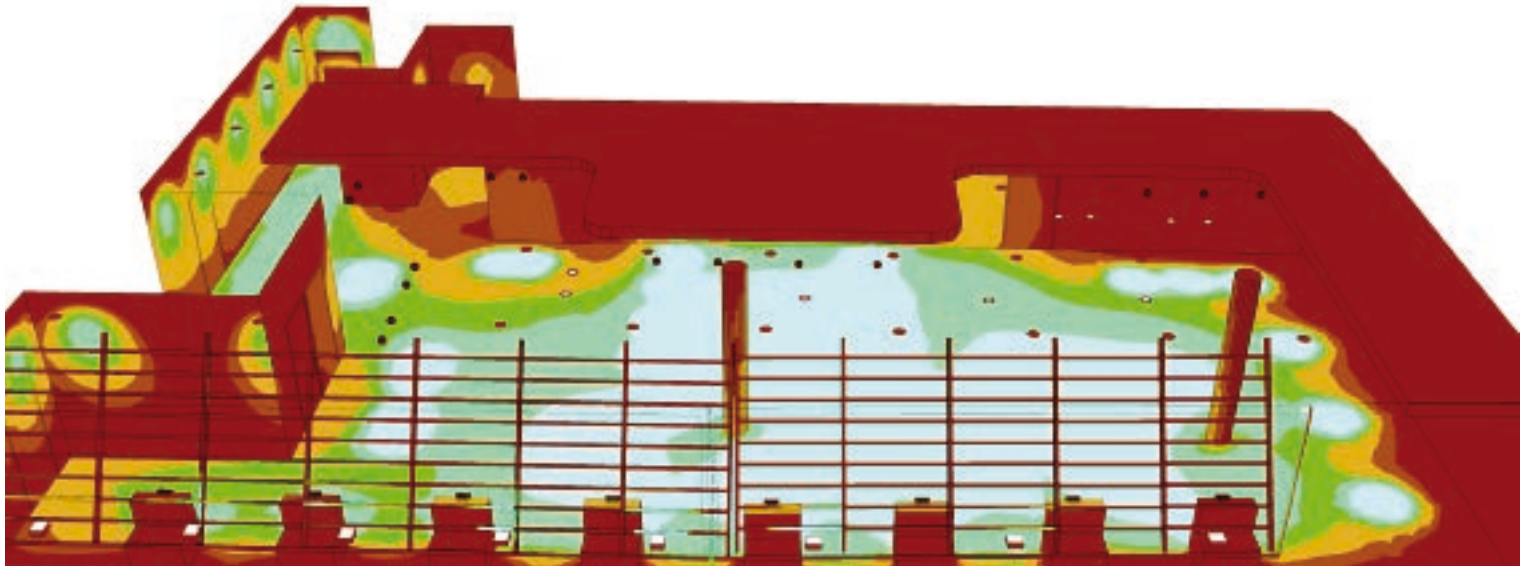




## Light consulting and lighting plan









# Rendering

Making 3D realistic renders of the concept: Modern 3D visualization provides a first impression of the final interior design. An important decision-making aid. We demonstrate the ambience of your rooms in a clear manner. This makes the spatial effect visible for everyone.

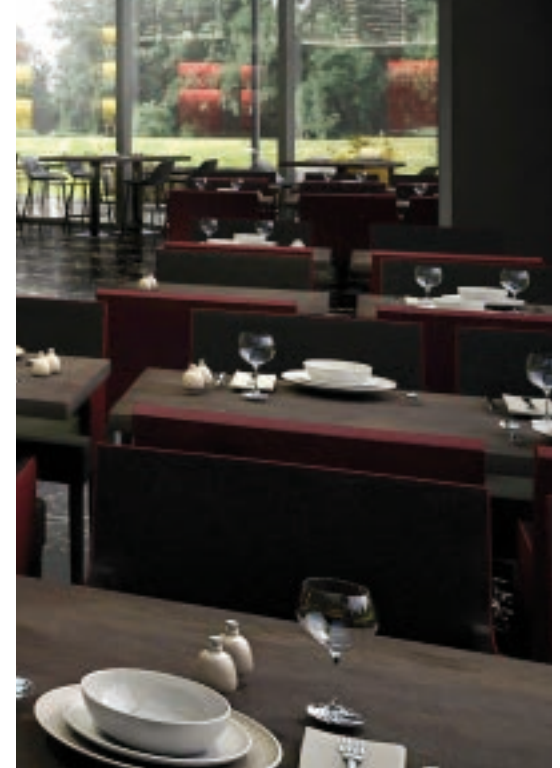
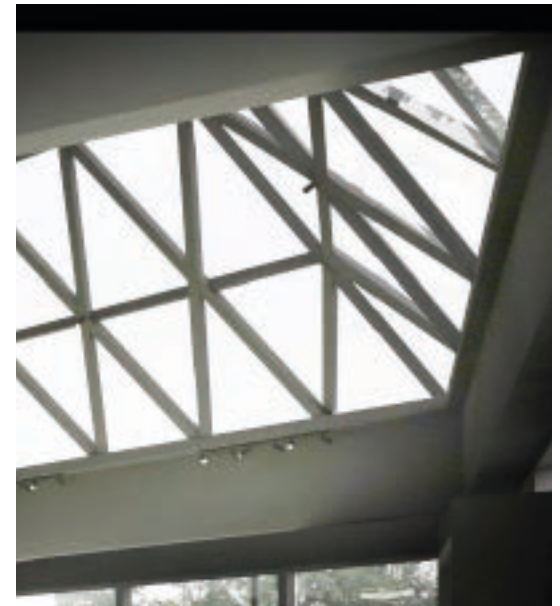




























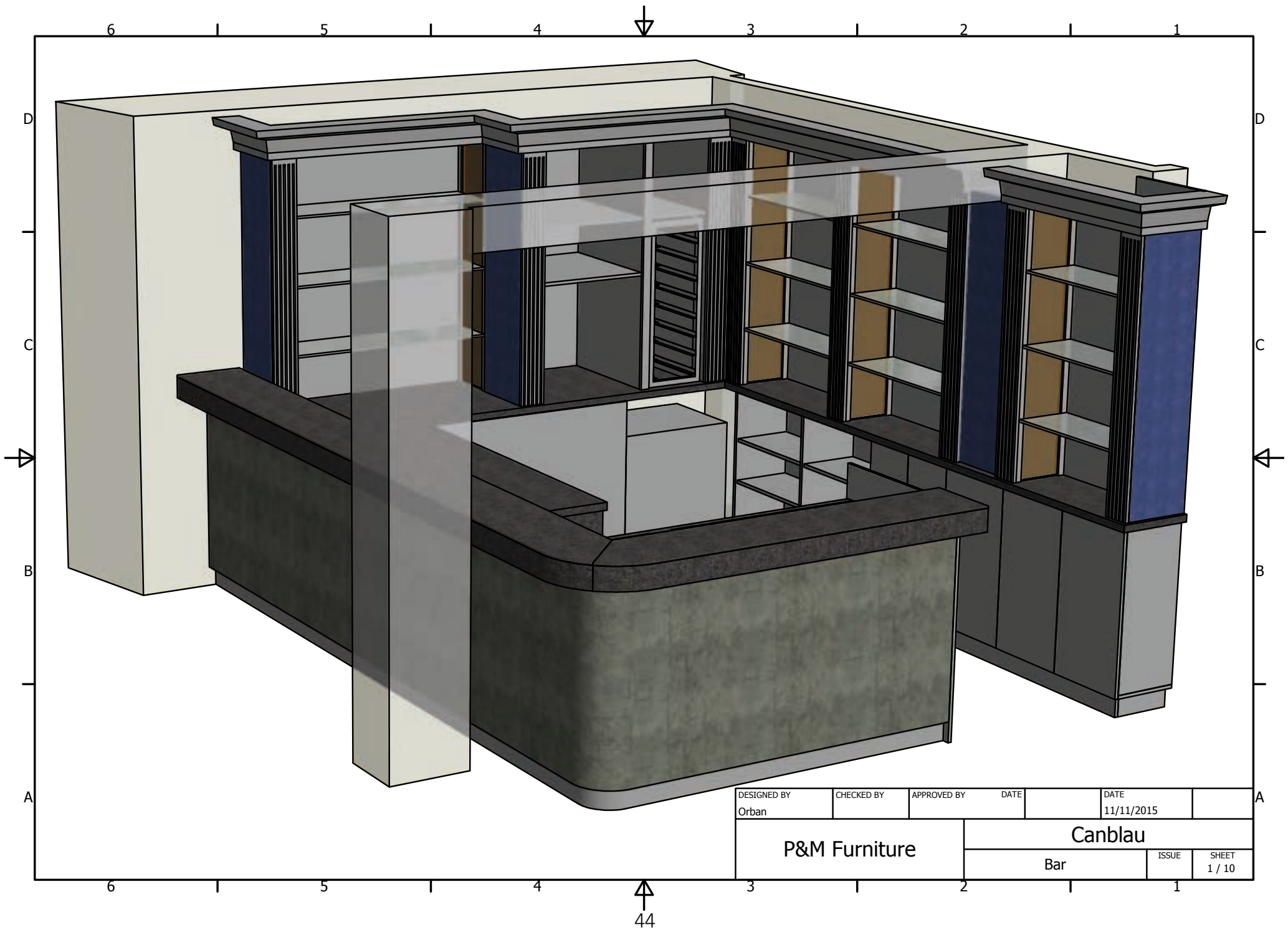








# Technical drawings





**Section B:B**

Dimensions: 362, 150, 136, 803, 803, 300, 668, 170, 295, 12, 1345, 700, 350, 120, 1000 Front panel, 1150, 1250, 620.

**Detail 1**  
Frontpanel fix it with hook slats

**Detail 2**  
Inside construction waterrezist multiplex  
Plint fix it with click sistem on the adjustable leg

**Detail 3**  
Gap for remove the frontpanel  
LED cables inside

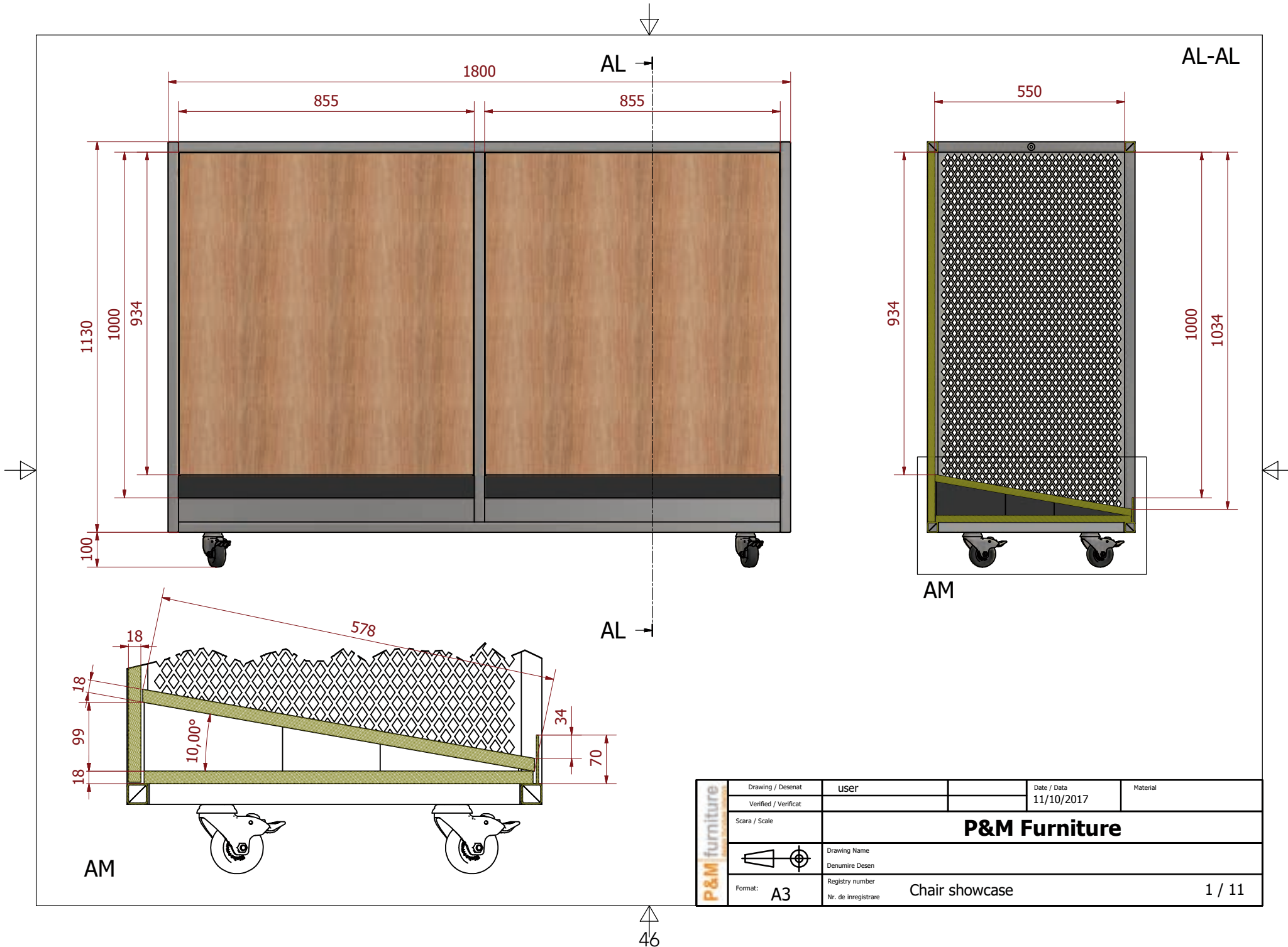
Waste basket  
The plint is fix it on the door

DESIGNED BY: Orban  
CHECKED BY:  
APPROVED BY:  
DATE: 11/11/2015

**P&M Furniture**  
**Canblau**  
Bar

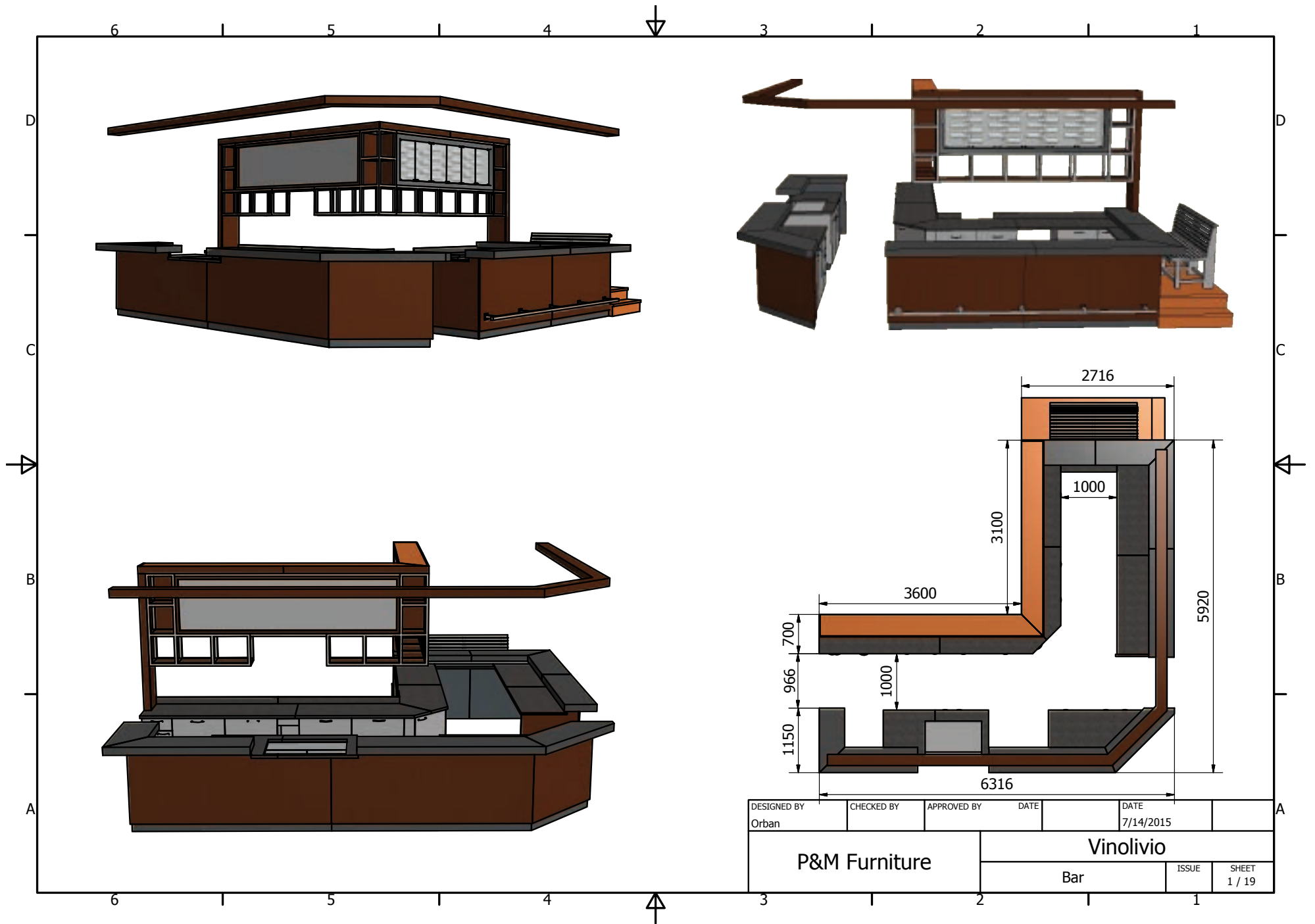
ISSUE: 6 / 10

45



P&M furniture	Drawing / Desenat	user	Date / Data	Material
	Verified / Verificat		11/10/2017	
	Scara / Scale	<b>P&amp;M Furniture</b>		
	Drawing Name			
	Denumire Desen			
Format:	Registry number			
A3	Nr. de inregistrare	Chair showcase		
				1 / 11





DESIGNED BY Orban	CHECKED BY	APPROVED BY	DATE	DATE 7/14/2015	
P&M Furniture			Vinolivio		
			Bar	ISSUE	SHEET 1 / 19



# References





Vinolivio, Hohberg





**ALEX**



Alex Gastronomie





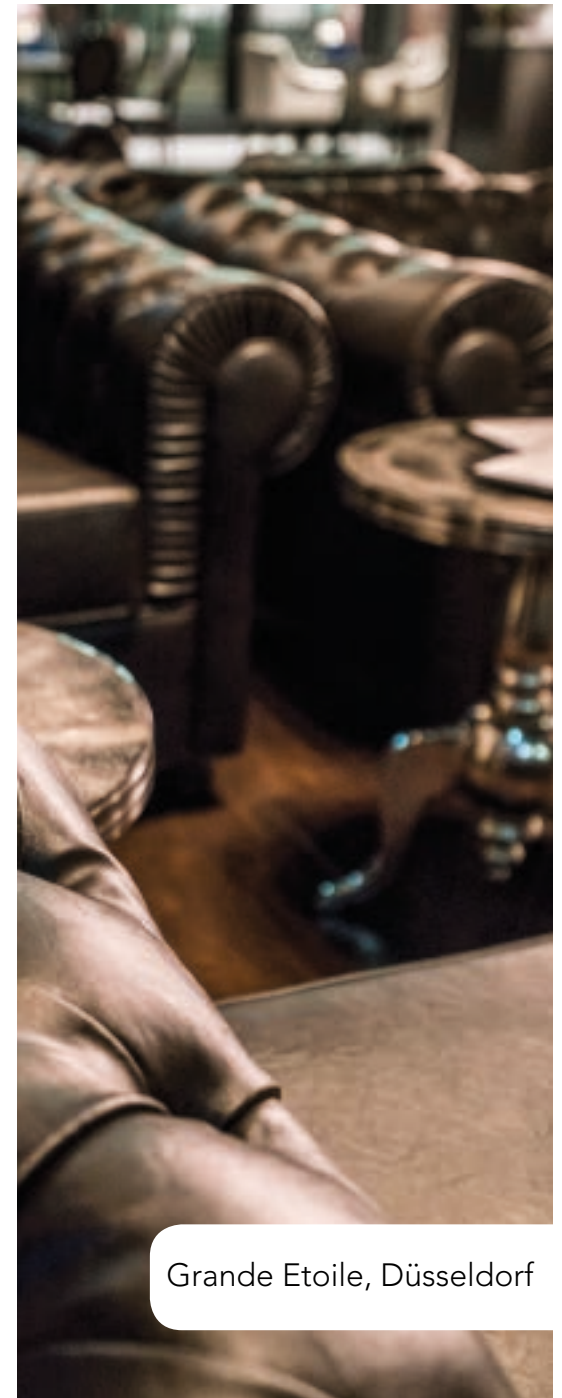
Primecut Steakhouse, Gießen





West Golf, Troisdorf





Grande Etoile, Düsseldorf





Alte Weinschenke, Meerbusch

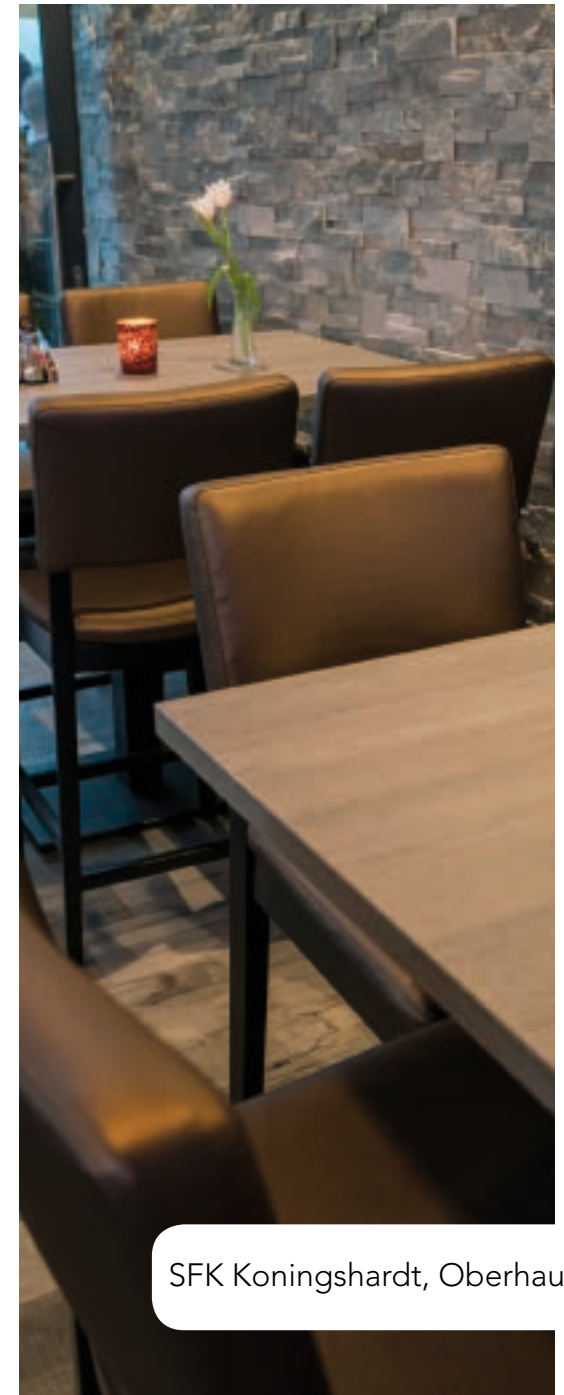






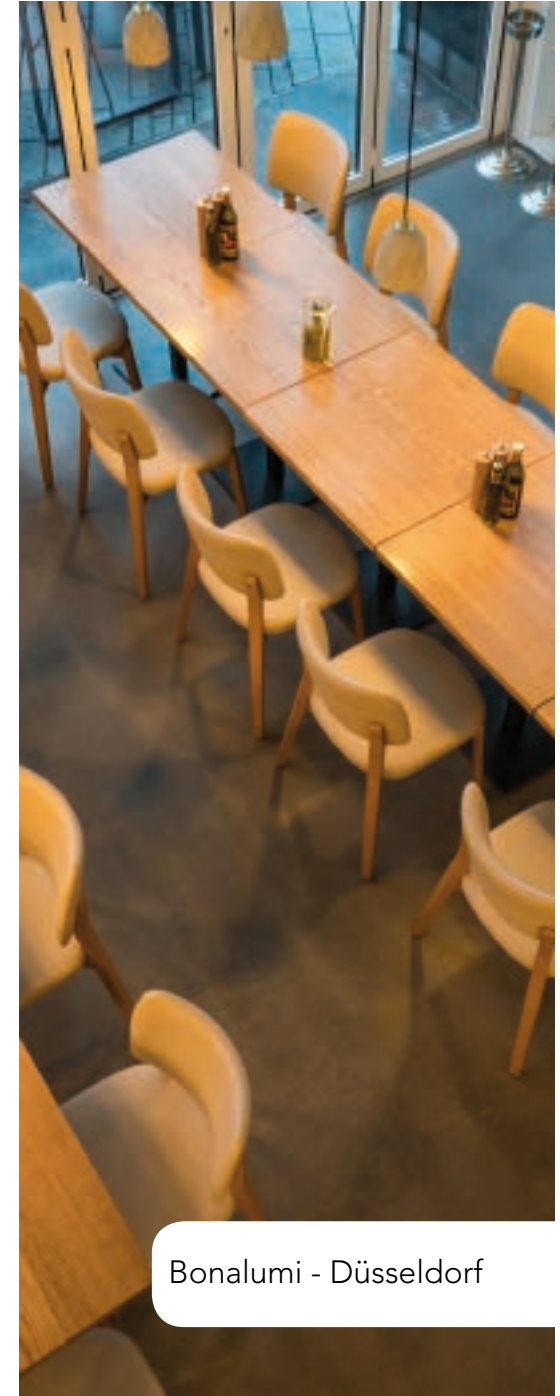
Marmaris, Kaldenkirchen





SFK Koningshardt, Oberhausen





Bonalumi - Düsseldorf





Coffee Fellows - Düsseldorf





Address Main office:  
P&M Furniture  
Jacob Merlostraat 24-26  
5961 AB HORST  
The Netherlands

Opening Hours: Mo-Fr: 8.30-17.30  
Phone: +31 77 3977888  
Email: [info@pmfurniture.com](mailto:info@pmfurniture.com)  
Email: [sales@pmfurniture.com](mailto:sales@pmfurniture.com)  
Web: [www.pmfurniture.com](http://www.pmfurniture.com)